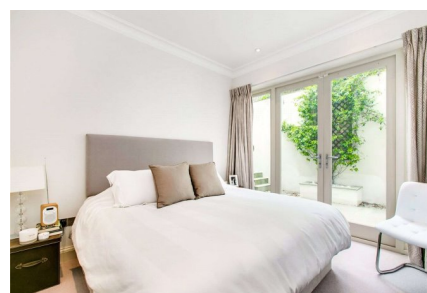


Upper Richmond Road, SW15

£750,000 Share of Freehold

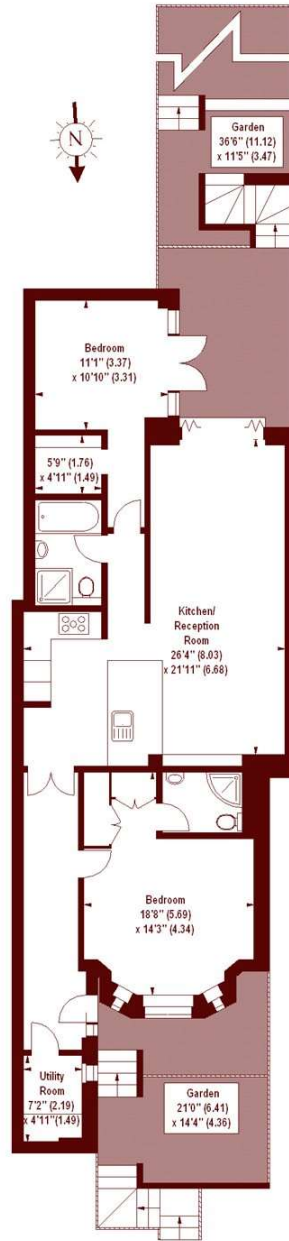


- Very stylish apartment
- Two double bedrooms
- Landscaped garden
- Two bathrooms

A superb two-bedroom garden flat, presented in excellent condition throughout.

Upper Richmond Road, SW15

APPROX. GROSS INTERNAL FLOOR AREA 1124 SQFT / 104.42 SQM



LOWER GROUND FLOOR

Illustration For Identification Purposes Only. Not To Scale
*Floorplan Drawn According To RICS Guidelines
Copyright of FeaturePRO

All viewings by appointment through our **BARNES office:**

T 020 8563 8333

E sales.bar@marshandparsons.co.uk

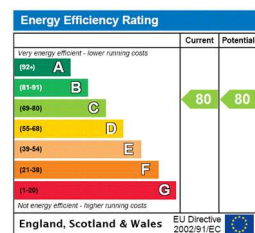
73/75 Church Road
London
SW13 9HH

marshandparsons.co.uk

Every attempt has been made to ensure accuracy, however all measurements are approximate and for illustrative purpose only. **Not to scale.**

In accordance with The Consumer Protection from Unfair Trading Regulations 2008 the following particulars have been prepared in good faith and they are not intended to constitute part of an offer or contract. We have not carried out a structural survey and the services, appliances and specific fittings have not been tested. All photographs, measurements floor plans and distances referred to are given as a guide only and should not be relied upon for the purchase of carpets or any other fixtures and fittings. Lease details, service charges and ground rent (where applicable) are given as a guide only and should be checked and confirmed by your Solicitor prior to exchange of contracts.

Full Energy Performance Certificate available on request.



@marshandparsons



@marshandparsons

We may refer you to recommended providers of ancillary services such as Financial Services and Insurance. We may receive a referral fee for recommending their services. You are not under any obligation to use the services of the recommended provider, which may also be an associated company of Marsh & Parsons.