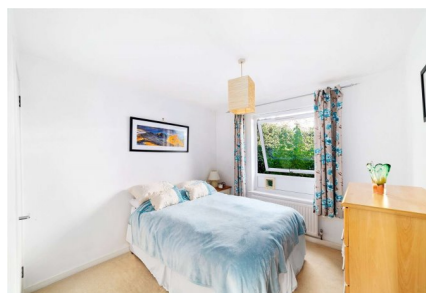


## Abbey Gardens, W6

**£500,000** Leasehold

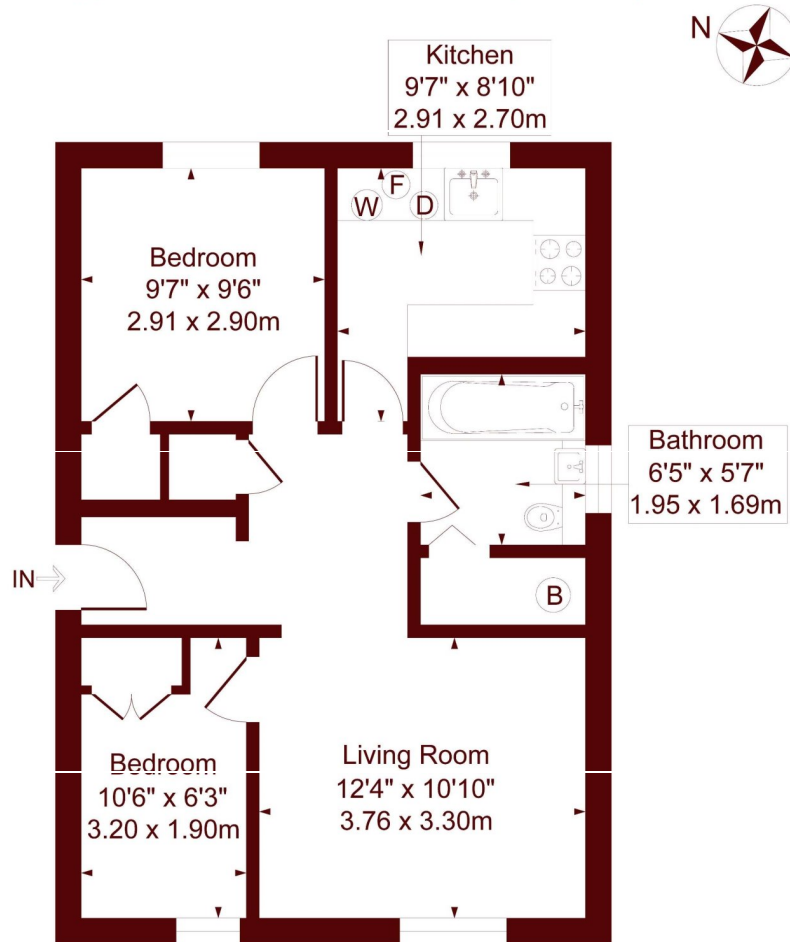


- Two bedrooms
- Allocated parking
- Communal garden
- Ground floor flat

A wonderful two-bedroom ground floor flat situated in a quiet residential development close to Barons Court tube station which has allocated off-street parking and a beautiful communal garden.

## Abbey Gardens

Approximate Gross Internal Area = 50 sq m / 537 sq ft



### Ground Floor

Measured in accordance with RICS guidelines. Every attempt is made to ensure accuracy  
However all measurements are approximate.  
The Floor plan is illustrative purposes Only and is not to scale  
ELLIE CLAIRE PHOTOGRAPHY LTD

All viewings by appointment through our  
**BISHOPS PARK office:**

T 020 7993 9888

E sales.bis@marshandparsons.co.uk

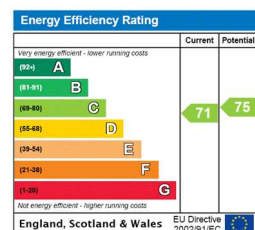
333 Fulham Palace Road  
London  
SW6 6TE

[marshandparsons.co.uk](http://marshandparsons.co.uk)

Every attempt has been made to ensure accuracy, however all measurements are approximate and for illustrative purpose only. **Not to scale.**

In accordance with The Consumer Protection from Unfair Trading Regulations 2008 the following particulars have been prepared in good faith and they are not intended to constitute part of an offer or contract. We have not carried out a structural survey and the services, appliances and specific fittings have not been tested. All photographs, measurements floor plans and distances referred to are given as a guide only and should not be relied upon for the purchase of carpets or any other fixtures and fittings. Lease details, service charges and ground rent (where applicable) are given as a guide only and should be checked and confirmed by your Solicitor prior to exchange of contracts.

Full Energy Performance Certificate available on request.



@marshandparsons



@marshandparsons

We may refer you to recommended providers of ancillary services such as Financial Services and Insurance. We may receive a referral fee for recommending their services. You are not under any obligation to use the services of the recommended provider, which may also be an associated company of Marsh & Parsons.