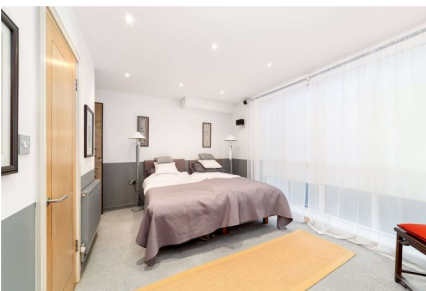


Royal College Street, NW1

Exchanged For: £710,000 Exchanged: June 2021 £708 psqft

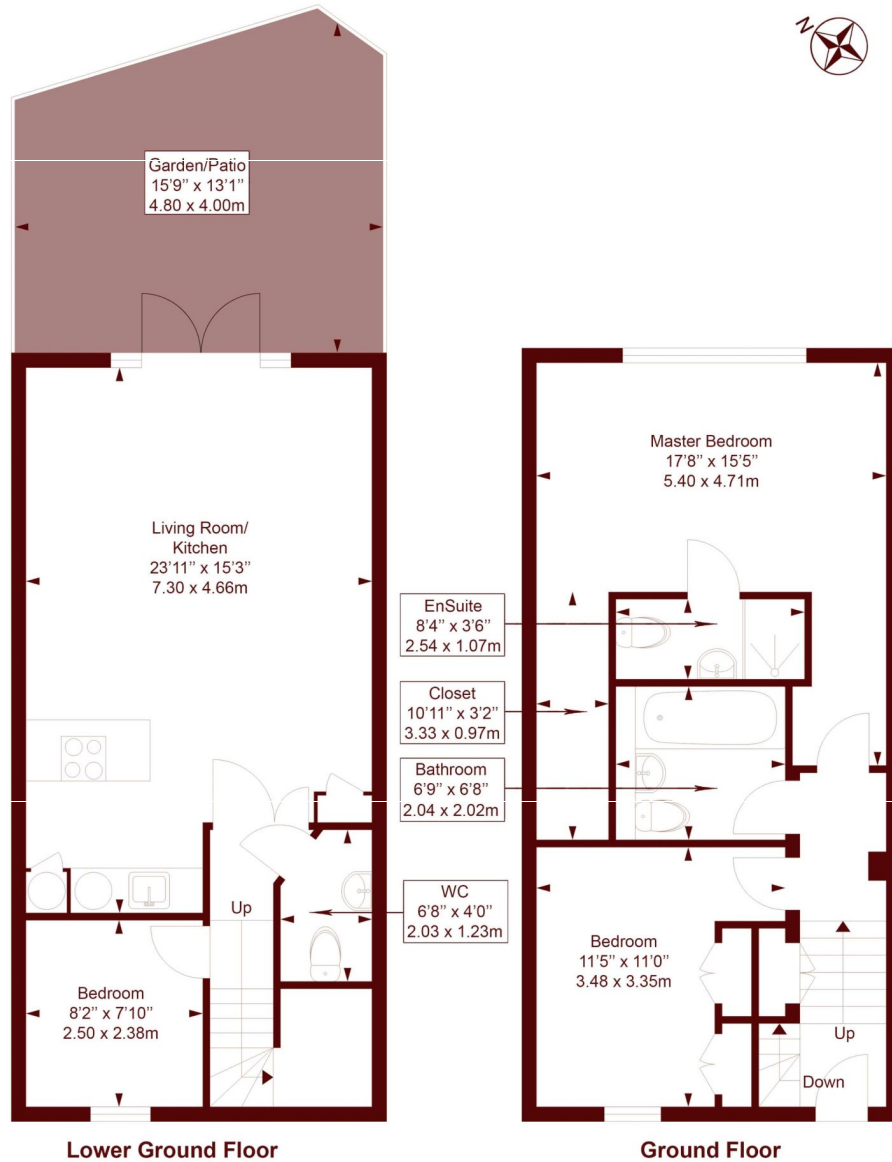


- Spacious rooms
- Private patio garden
- Excellent condition
- Close to transport links

A fantastic three-bedroom, two bathroom duplex apartment arranged over the ground and first floors of a modern purpose built block.

Royal College Street

APPROX. GROSS INTERNAL FLOOR AREA: 1001 SQFT/ 93 SQM



Lower Ground Floor

Ground Floor

Measured in accordance with RICS guidelines. Every attempt is made to ensure accuracy However all measurements are approximate.

The floor plan is illustrative purposes only and is not to scale
 ELLIE CLAIRE PHOTOGRAPHY LTD
 www.ellieclairephotography.com

All viewings by appointment through our **CAMDEN office:**

T 020 7244 2200

E sales.cam@marshandparsons.co.uk

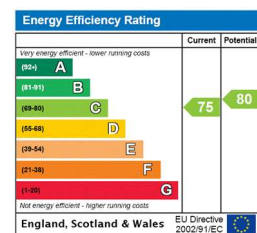
27 Parkway
 London
 NW1 7PN

marshandparsons.co.uk

Every attempt has been made to ensure accuracy, however all measurements are approximate and for illustrative purpose only. **Not to scale.**

In accordance with The Consumer Protection from Unfair Trading Regulations 2008 the following particulars have been prepared in good faith and they are not intended to constitute part of an offer or contract. We have not carried out a structural survey and the services, appliances and specific fittings have not been tested. All photographs, measurements floor plans and distances referred to are given as a guide only and should not be relied upon for the purchase of carpets or any other fixtures and fittings. Lease details, service charges and ground rent (where applicable) are given as a guide only and should be checked and confirmed by your Solicitor prior to exchange of contracts.

Full Energy Performance Certificate available on request.



@marshandparsons



@marshandparsons

We may refer you to recommended providers of ancillary services such as Financial Services and Insurance. We may receive a referral fee for recommending their services. You are not under any obligation to use the services of the recommended provider, which may also be an associated company of Marsh & Parsons.