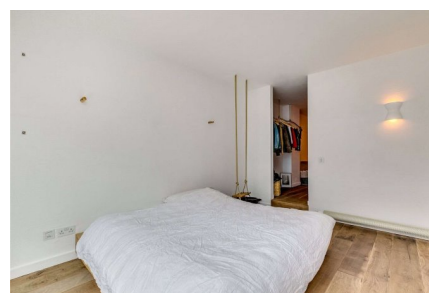


Arlington Road, NW1

£1,250,000 Leasehold

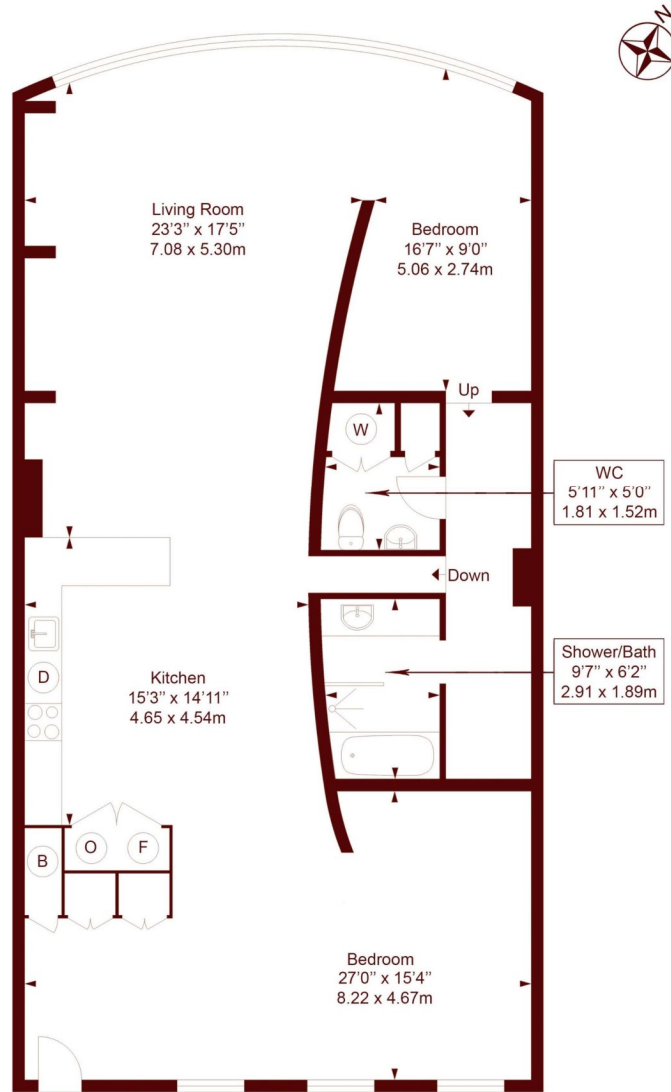


- Bright and spacious
- Lift and Porter
- Two-bedrooms
- Japanese style communal terrace

A stunning two-bedroom apartment on the first floor of this sought after architect designed building in the heart of Camden offering fantastic proportions throughout.

Arlington Road

APPROX. GROSS INTERNAL FLOOR AREA: 1499 SQFT/ 139.3 SQM



First Floor

Measured in accordance with RICS guidelines. Every attempt is made to ensure accuracy. However all measurements are approximate. The floor plan is illustrative purposes only and is not to scale. ELLIE CLAIRE PHOTOGRAPHY LTD www.ellieclairephotography.com

All viewings by appointment through our **CAMDEN office:**

T 020 7244 2200

E sales.cam@marshandparsons.co.uk

27 Parkway
London
NW1 7PN

marshandparsons.co.uk

Every attempt has been made to ensure accuracy, however all measurements are approximate and for illustrative purpose only. **Not to scale.**

In accordance with The Consumer Protection from Unfair Trading Regulations 2008 the following particulars have been prepared in good faith and they are not intended to constitute part of an offer or contract. We have not carried out a structural survey and the services, appliances and specific fittings have not been tested. All photographs, measurements floor plans and distances referred to are given as a guide only and should not be relied upon for the purchase of carpets or any other fixtures and fittings. Lease details, service charges and ground rent (where applicable) are given as a guide only and should be checked and confirmed by your Solicitor prior to exchange of contracts.

Full Energy Performance Certificate available on request.

Energy Efficiency Rating		Current	Potential
Very energy efficient - lower running costs	A		
(81-91)	B	87	87
(69-80)	C		
(55-68)	D		
(39-54)	E		
(21-38)	F		
(1-20)	G		
Not energy efficient - higher running costs			
England, Scotland & Wales		EU Directive 2002/91/EC	



@marshandparsons



@marshandparsons

We may refer you to recommended providers of ancillary services such as Financial Services and Insurance. We may receive a referral fee for recommending their services. You are not under any obligation to use the services of the recommended provider, which may also be an associated company of Marsh & Parsons.