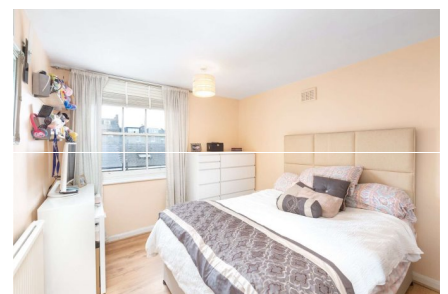
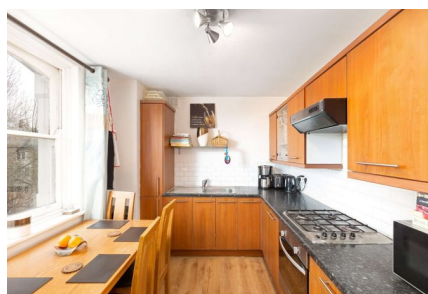


Camden Road, NW1

£500,000 Share of Freehold

Exchange Date: October 2021

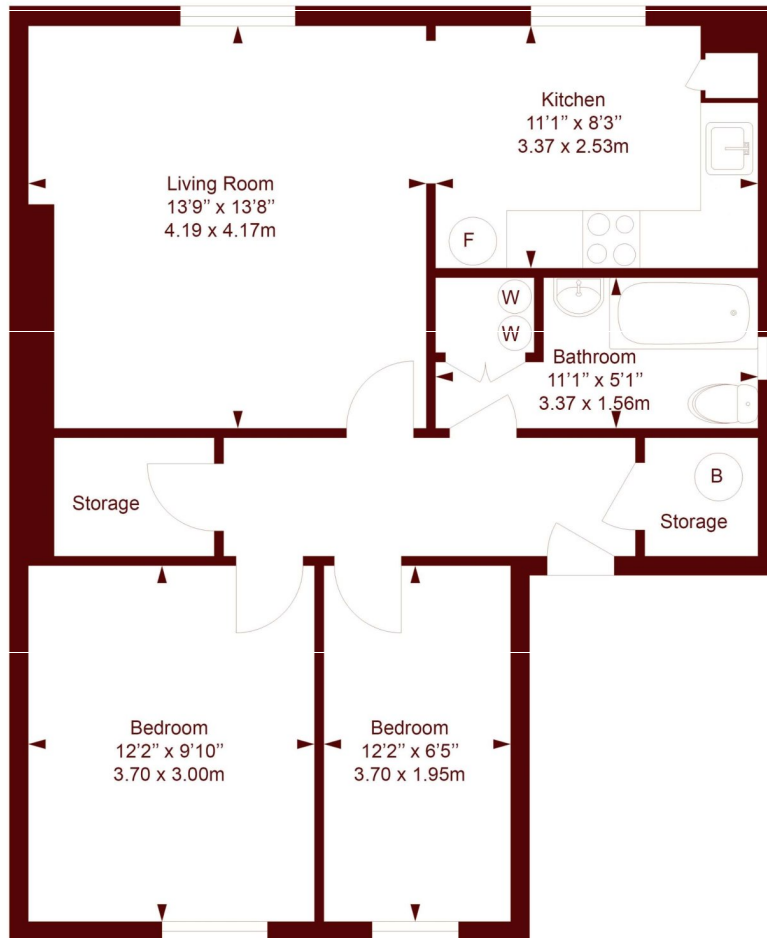


- Bright and spacious
- Communal garden
- Share Of freehold
- Close to many transport links

A charming, two-bedroom second floor period conversion located close to the many amenities of Camden Town and within very easy reach of both Camden Road and Camden Town stations.

Camden Road

APPROX. GROSS INTERNAL FLOOR AREA: 735 SQFT/ 68.3 SQM



Second Floor

Measured in accordance with RICS guidelines. Every attempt is made to ensure accuracy
However all measurements are approximate.

The floor plan is illustrative purposes only and is not to scale

ELLIE CLAIRE PHOTOGRAPHY LTD
www.ellieclairephotography.com

All viewings by appointment through our
CAMDEN office:

T 020 7244 2200

E sales.cam@marshandparsons.co.uk

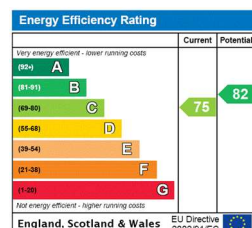
27 Parkway
London
NW1 7PN

marshandparsons.co.uk

Every attempt has been made to ensure accuracy, however all measurements are approximate and for illustrative purpose only. **Not to scale.**

In accordance with The Consumer Protection from Unfair Trading Regulations 2008 the following particulars have been prepared in good faith and they are not intended to constitute part of an offer or contract. We have not carried out a structural survey and the services, appliances and specific fittings have not been tested. All photographs, measurements floor plans and distances referred to are given as a guide only and should not be relied upon for the purchase of carpets or any other fixtures and fittings. Lease details, service charges and ground rent (where applicable) are given as a guide only and should be checked and confirmed by your Solicitor prior to exchange of contracts.

Full Energy Performance Certificate available on request.



@marshandparsons



@marshandparsons

We may refer you to recommended providers of ancillary services such as Financial Services and Insurance. We may receive a referral fee for recommending their services. You are not under any obligation to use the services of the recommended provider, which may also be an associated company of Marsh & Parsons.