

## The Quadrangle, SW10

**£1,000,000** Leasehold

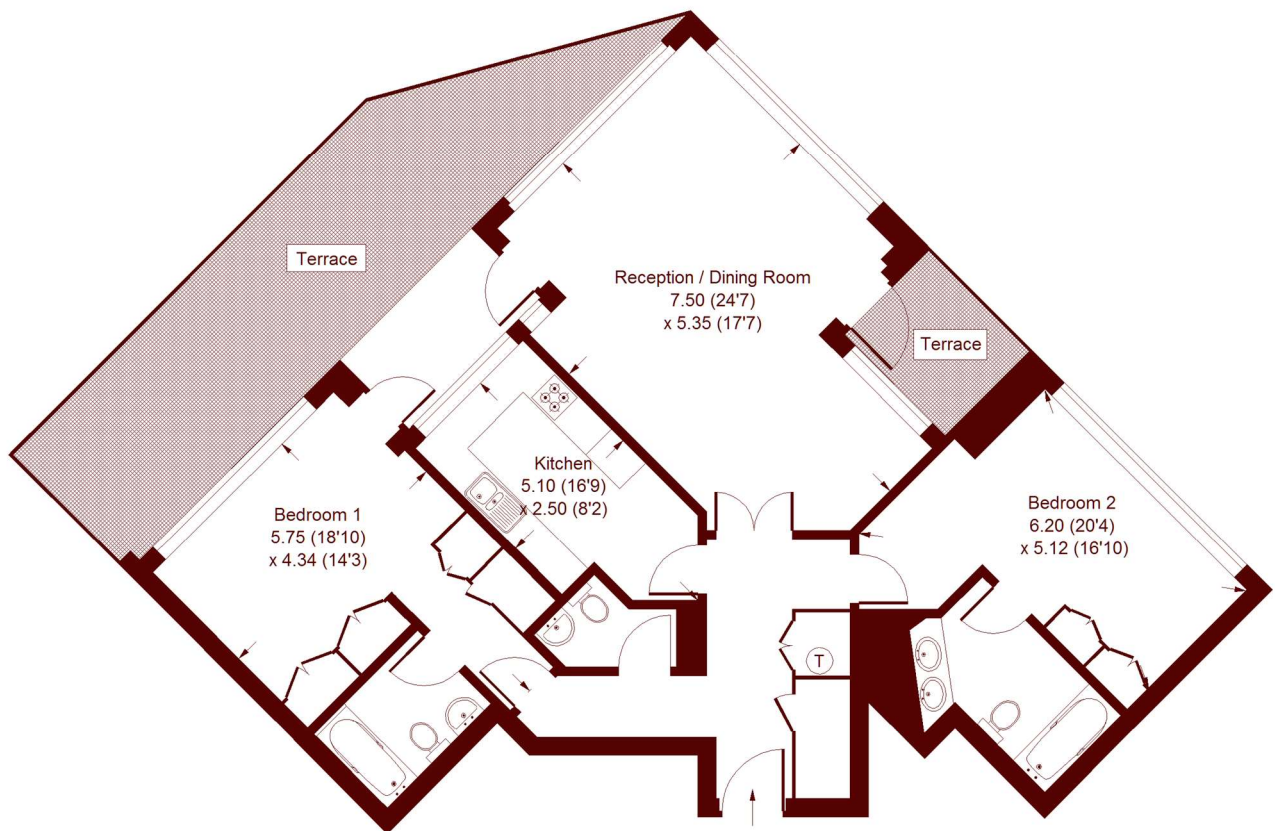


- Two bedrooms
- Beautiful proportions
- Private parking
- Porter

This stunning apartment with large terrace, is situated in the very popular Chelsea development next to the Thames

## The Quadrangle, SW10

Approx. Gross Internal Area  
110 sq m / 1184 sq ft



### Ground Floor

Illustration for Identification Purposes Only. Not to Scale.

All viewings by appointment through our **CHELSEA office:**

**T** 020 7591 5570

**E** sales.chs@marshandparsons.co.uk

Rawlings House  
2A Milner Street  
London  
SW3 2PU

**marshandparsons.co.uk**

Every attempt has been made to ensure accuracy, however all measurements are approximate and for illustrative purpose only. **Not to scale.**

In accordance with The Consumer Protection from Unfair Trading Regulations 2008 the following particulars have been prepared in good faith and they are not intended to constitute part of an offer or contract. We have not carried out a structural survey and the services, appliances and specific fittings have not been tested. All photographs, measurements floor plans and distances referred to are given as a guide only and should not be relied upon for the purchase of carpets or any other fixtures and fittings. Lease details, service charges and ground rent (where applicable) are given as a guide only and should be checked and confirmed by your Solicitor prior to exchange of contracts.

Full Energy Performance Certificate available on request.

Energy Efficiency Rating		Current	Potential
Very energy efficient - lower running costs			
(91-100)	A		
(81-90)	B		
(69-80)	C		
(55-68)	D	68	76
(39-54)	E		
(21-38)	F		
(1-20)	G		
Not energy efficient - higher running costs			
England, Scotland & Wales EU Directive 2002/91/EC			



@marshandparsons



@marshandparsons

We may refer you to recommended providers of ancillary services such as Financial Services and Insurance. We may receive a referral fee for recommending their services. You are not under any obligation to use the services of the recommended provider, which may also be an associated company of Marsh & Parsons.