

New Kings Road, SW6

£1,950,000 Freehold



- Five bedrooms
- Off-street parking
- End-of-terrace
- Excellent condition throughout

An impressive end-of-terrace five bedroom house with private off-street parking.

New Kings Road, SW6

APPROX. GROSS INTERNAL FLOOR AREA 2256 SQFT / 209.58 SQM

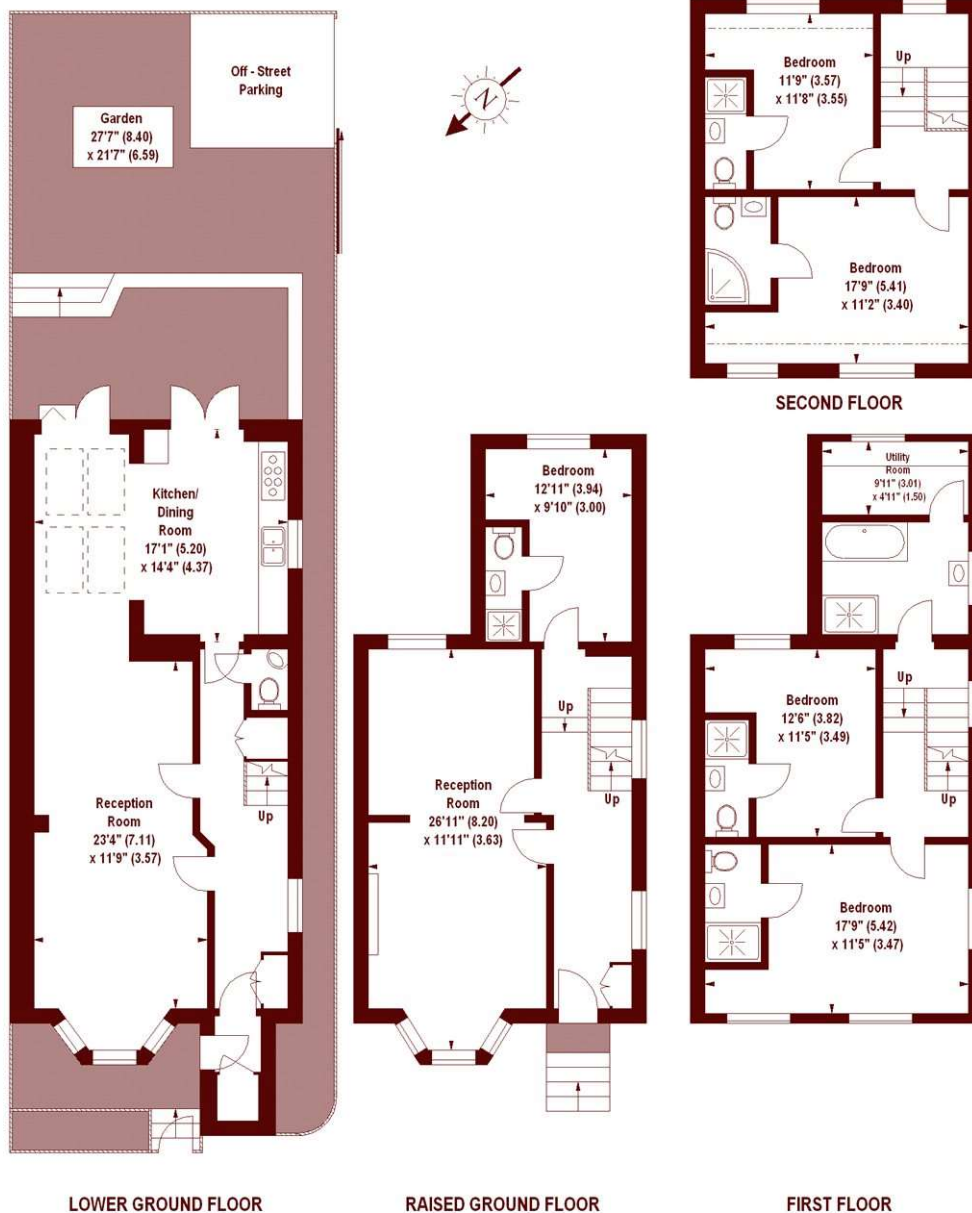


Illustration For Identification Purposes Only. Not To Scale
*Floorplan Drawn According To RICS Guidelines
Copyright of FeaturePRO

All viewings by appointment through our **FULHAM office:**

T 020 7736 9822

E sales.ful@marshandparsons.co.uk

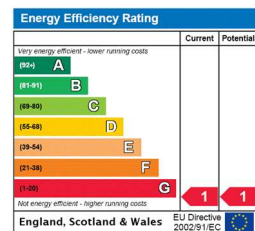
105 Moore Park Road
Fulham
London
SW6 2DA

marshandparsons.co.uk

Every attempt has been made to ensure accuracy, however all measurements are approximate and for illustrative purpose only. **Not to scale.**

In accordance with The Consumer Protection from Unfair Trading Regulations 2008 the following particulars have been prepared in good faith and they are not intended to constitute part of an offer or contract. We have not carried out a structural survey and the services, appliances and specific fittings have not been tested. All photographs, measurements floor plans and distances referred to are given as a guide only and should not be relied upon for the purchase of carpets or any other fixtures and fittings. Lease details, service charges and ground rent (where applicable) are given as a guide only and should be checked and confirmed by your Solicitor prior to exchange of contracts.

Full Energy Performance Certificate available on request.



@marshandparsons



@marshandparsons

We may refer you to recommended providers of ancillary services such as Financial Services and Insurance. We may receive a referral fee for recommending their services. You are not under any obligation to use the services of the recommended provider, which may also be an associated company of Marsh & Parsons.