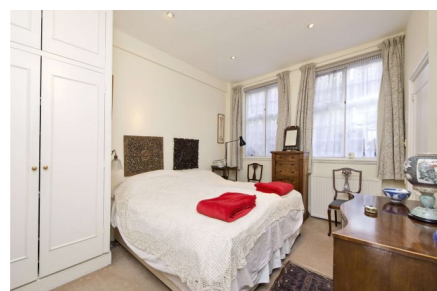


Stafford Court, W8

£1,795,000 Leasehold

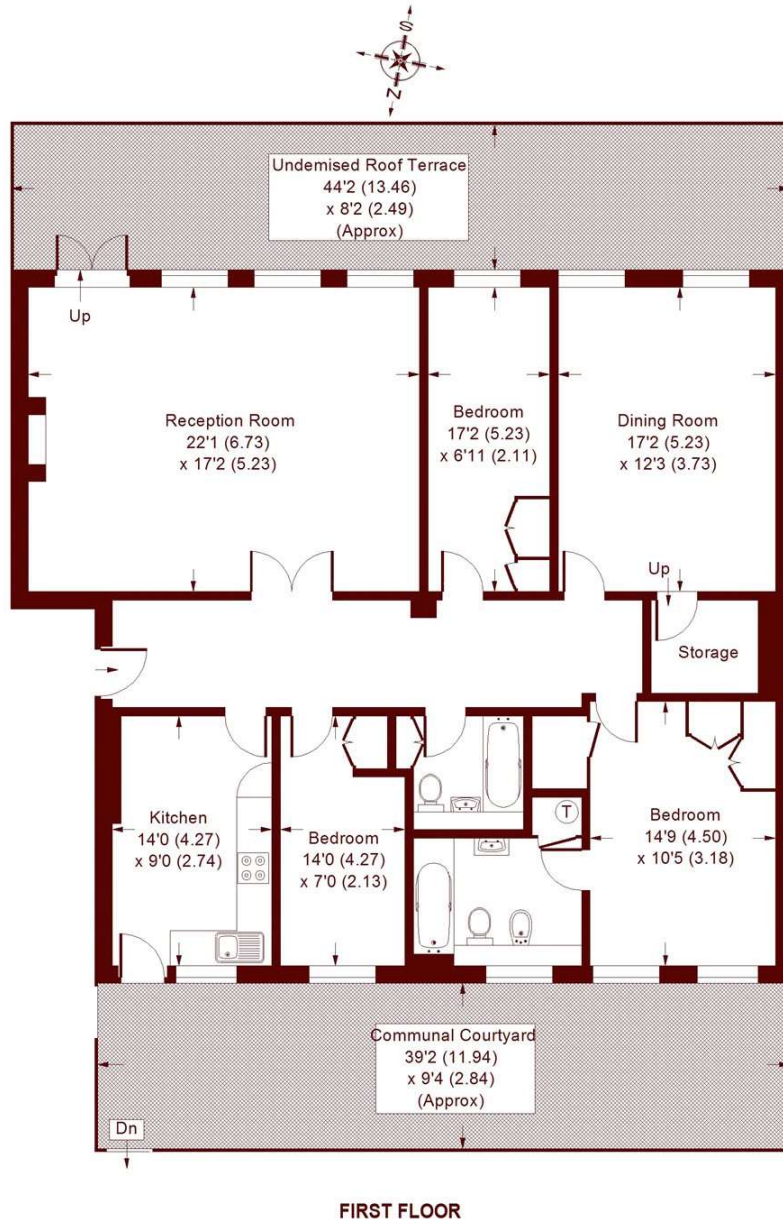


- Four double bedrooms
- Southerly aspect
- Porter and lift
- Central Kensington location

A substantial lateral apartment for sale set on the first floor of this popular portered building in the heart of Kensington.

Stafford Court, W8

APPROX. GROSS INTERNAL FLOOR AREA
1530 SQFT / 142.1 SQM



Whilst every attempt has been made to ensure the accuracy of the floor plan, measurements are approximate and not to scale. No guarantee is given on the total square footage of the property quoted on the plan. Figures given are for guidance. Plan is for illustration purposes only.

All viewings by appointment through our **KENSINGTON office:**

T 020 7368 4450

E sales.kns@marshandparsons.co.uk

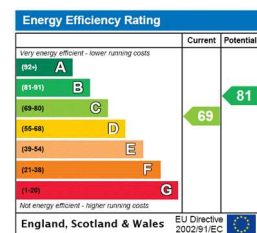
9 Kensington Church Street
London
W8 4LF

marshandparsons.co.uk

Every attempt has been made to ensure accuracy, however all measurements are approximate and for illustrative purpose only. **Not to scale.**

In accordance with The Consumer Protection from Unfair Trading Regulations 2008 the following particulars have been prepared in good faith and they are not intended to constitute part of an offer or contract. We have not carried out a structural survey and the services, appliances and specific fittings have not been tested. All photographs, measurements floor plans and distances referred to are given as a guide only and should not be relied upon for the purchase of carpets or any other fixtures and fittings. Lease details, service charges and ground rent (where applicable) are given as a guide only and should be checked and confirmed by your Solicitor prior to exchange of contracts.

Full Energy Performance Certificate available on request.



@marshandparsons



@marshandparsons

We may refer you to recommended providers of ancillary services such as Financial Services and Insurance. We may receive a referral fee for recommending their services. You are not under any obligation to use the services of the recommended provider, which may also be an associated company of Marsh & Parsons.