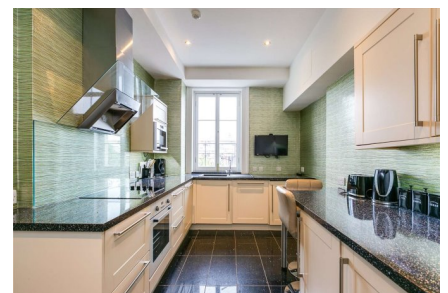


## Spring Gardens, SW1A

**£2,150,000** Leasehold



- Iconic views of Trafalgar Square
- Top floor flat
- Dual aspect reception room
- High ceilings

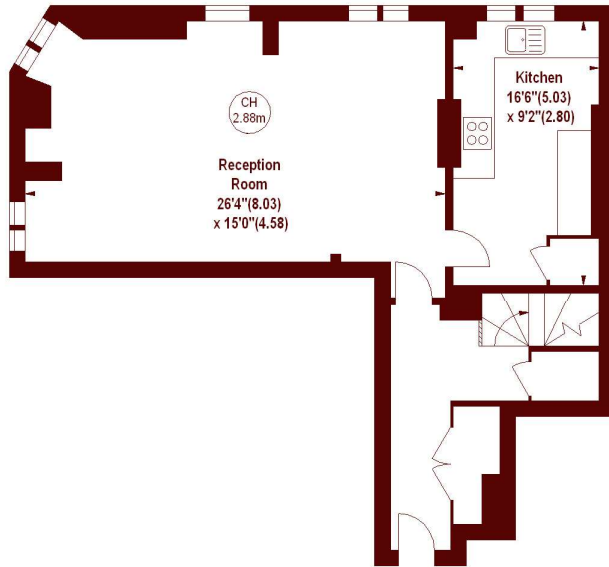
A seldom available opportunity to acquire an elegant two double bedroom apartment with one of the most iconic views in all of London; overlooking Trafalgar Square and Nelson's Column.

## Spring Gardens, SW1A

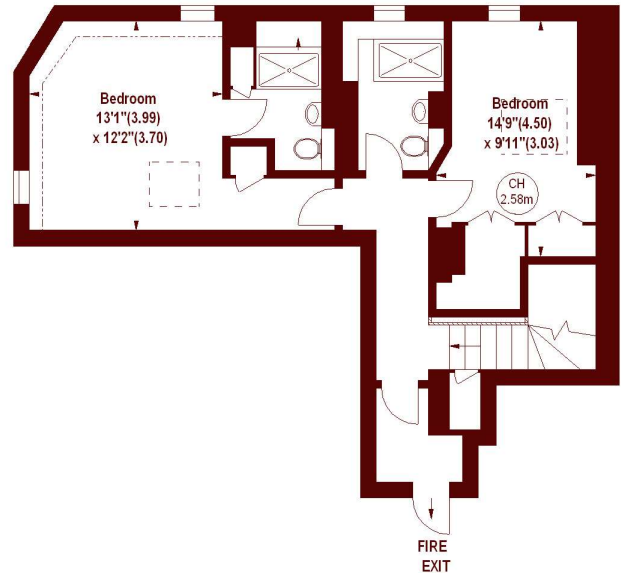
APPROX. GROSS INTERNAL FLOOR AREA 1328 SQFT / 123.37 SQM



Key :  
CH - Ceiling Height



THIRD FLOOR



FOURTH FLOOR

The floor plan is not to scale and measurements and areas shown are approximate and therefore should be used for illustrative purposes only. The plan has been prepared in accordance with the RICS code of Measuring Practice and whilst we have confidence in the information produced, it must not be relied on. If there is any aspect of particular importance, you should carry out or commission your own inspection of the property.  
Copyright of FeaturePRO.

All viewings by appointment through our **PIMLICO office:**

**T** 020 7828 8100

**E** sales.pim@marshandparsons.co.uk

53 Warwick Way  
London  
SW1 1QS

**marshandparsons.co.uk**

Every attempt has been made to ensure accuracy, however all measurements are approximate and for illustrative purpose only. **Not to scale.**

In accordance with The Consumer Protection from Unfair Trading Regulations 2008 the following particulars have been prepared in good faith and they are not intended to constitute part of an offer or contract. We have not carried out a structural survey and the services, appliances and specific fittings have not been tested. All photographs, measurements floor plans and distances referred to are given as a guide only and should not be relied upon for the purchase of carpets or any other fixtures and fittings. Lease details, service charges and ground rent (where applicable) are given as a guide only and should be checked and confirmed by your Solicitor prior to exchange of contracts.



@marshandparsons



@marshandparsons

We may refer you to recommended providers of ancillary services such as Financial Services and Insurance. We may receive a referral fee for recommending their services. You are not under any obligation to use the services of the recommended provider, which may also be an associated company of Marsh & Parsons.