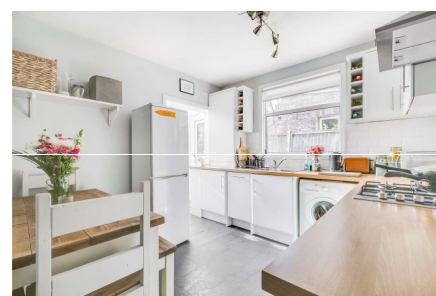


# Bickley Street, SW17

**£535,000** Share of Freehold

Completed: December 2021

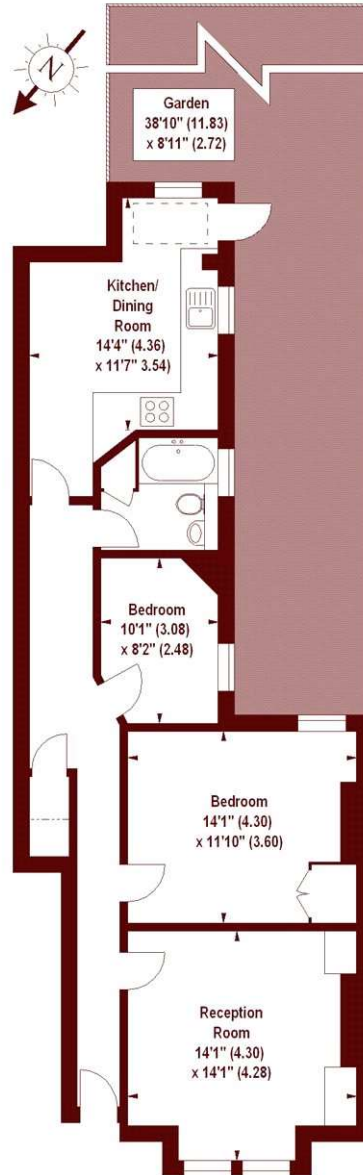


- Two-Bedrooms
- High Ceilings
- South Westerly Garden
- Close to Transport Links

An impressively presented two-bedroom maisonette with private south-east facing garden, located on a popular road.

## Bickley Street, SW17

APPROX. GROSS INTERNAL FLOOR AREA 812 SQFT / 75.43 SQM



GROUND FLOOR

Illustration For Identification Purposes Only. Not To Scale  
\*Floorplan Drawn According To RICS Guidelines  
Copyright of FeaturePRO

All viewings by appointment through our **TOOTING office:**

**T** 020 8767 3655

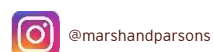
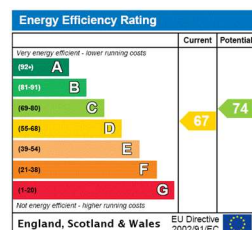
**E** sales.too@marshandparsons.co.uk

29-31 Upper Tooting Road  
London  
SW17 7TS

**marshandparsons.co.uk**

Every attempt has been made to ensure accuracy, however all measurements are approximate and for illustrative purpose only. **Not to scale.** In accordance with The Consumer Protection from Unfair Trading Regulations 2008 the following particulars have been prepared in good faith and they are not intended to constitute part of an offer or contract. We have not carried out a structural survey and the services, appliances and specific fittings have not been tested. All photographs, measurements floor plans and distances referred to are given as a guide only and should not be relied upon for the purchase of carpets or any other fixtures and fittings. Lease details, service charges and ground rent (where applicable) are given as a guide only and should be checked and confirmed by your Solicitor prior to exchange of contracts.

Full Energy Performance Certificate available on request.



We may refer you to recommended providers of ancillary services such as Financial Services and Insurance. We may receive a referral fee for recommending their services. You are not under any obligation to use the services of the recommended provider, which may also be an associated company of Marsh & Parsons.